

➤➤ Manhole cover SD11, for flush fitting, lightweight design



The figure shown here may contain special accessories

Manhole cover, lift-off design, for flush fitting, weather-proof, rectangular type, load-bearing up to 500 kg/m², made of 1.4307 (AISI 304 L) stainless steel.

The cover consists of a stainless steel tear pattern plate, with additional bracing on the bottom according to static requirements, certified slip resistance – grip coefficient USRV 54, with a low-wear seal on the cover bottom side, lockable with hexagon screws.

Frame made from U-profile, installation dimensions 60 x 60mm, provided for installation in an existing rabbet.

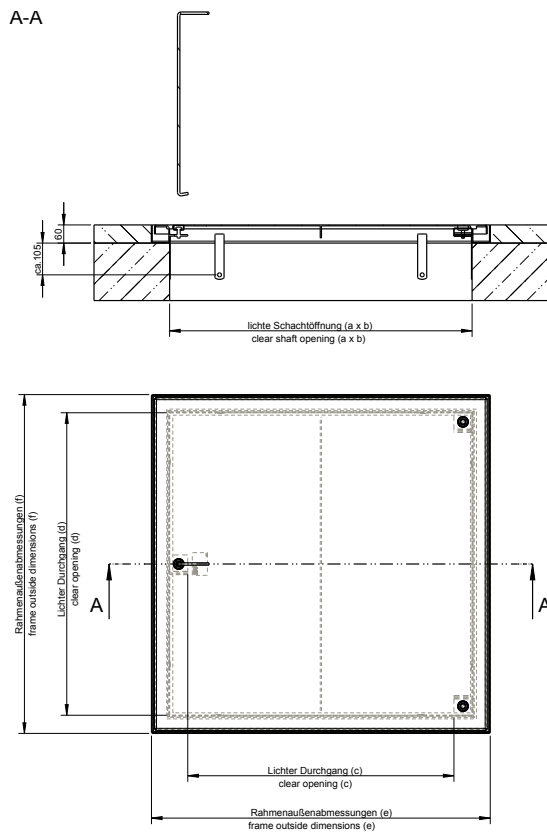
Manhole cover and frame shielded arc-welded, acid-treated in a pickling bath and passivated.

Operating key included.

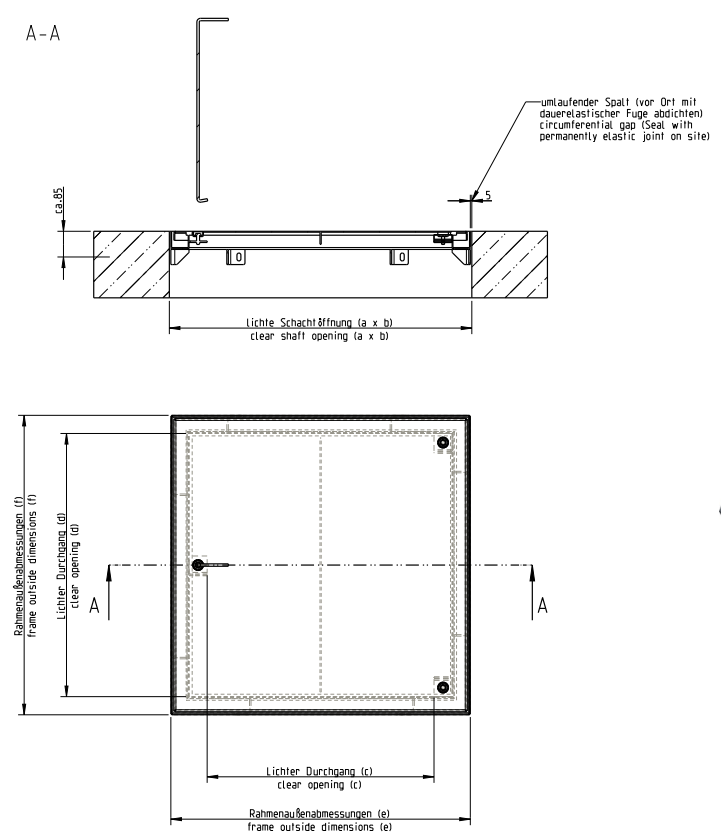
Options:

- 1.4404 (AISI 316 L) stainless steel
- With hinges, stainless steel gas-assisted spring dampers and integrated arrestor which can only be undone by hand
- For installation into a manhole neck
- Fixing material and foam rubber gasket
- Magnetic contact (cover open/shut indicator)
- Safety guard / barrier
- Safety guard / antifall guard
- Multi-part cover

SD11, installed in on-site rabbet



SD11, installed in manhole neck



Model	Clear manhole opening a x b	Order no.	Inside pass c x d	Frame outside dimensions e x f
Standard model, lift-off design, installation in rabbet	800 x 800	SD11.1 800x800	792 x 680	920 x 920
Standard model, lift-off design, installation in rabbet	1000 x 1000	SD11.1 1000x1000	992 x 880	1120 x 1120
Standard model, lift-off design, installation in manhole neck	800 x 800	SD11.1 800x800 AD	670 x 550	790 x 790
Standard model, lift-off design, installation in manhole neck	1000 x 1000	SD11.1 1000x1000 AD	870 x 750	990 x 990

Ask for further dimensions. All measurements in mm.

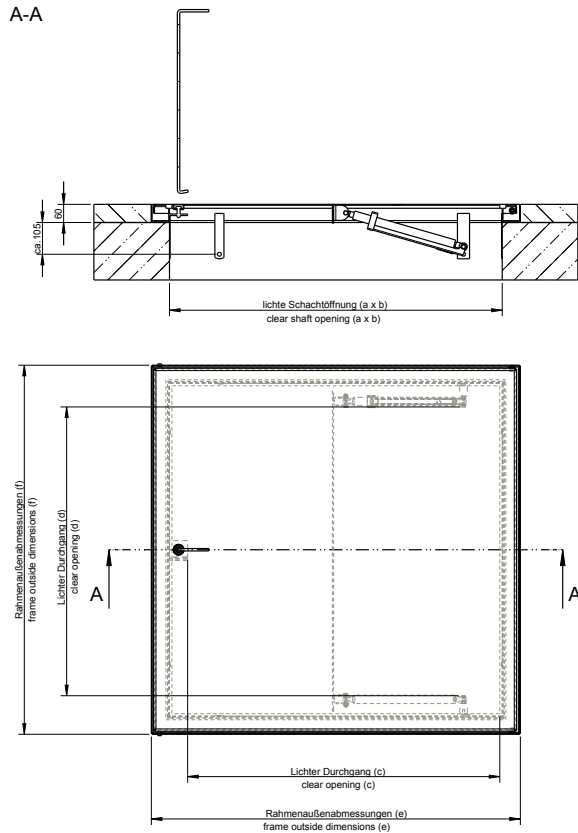
HUBER SE

Industriepark Erasbach A1 · D-92334 Berching
Phone: + 49 - 84 62 - 201 - 0 · Fax: + 49 - 84 62 - 201 - 810
info@huber.de · Internet: www.huber.de

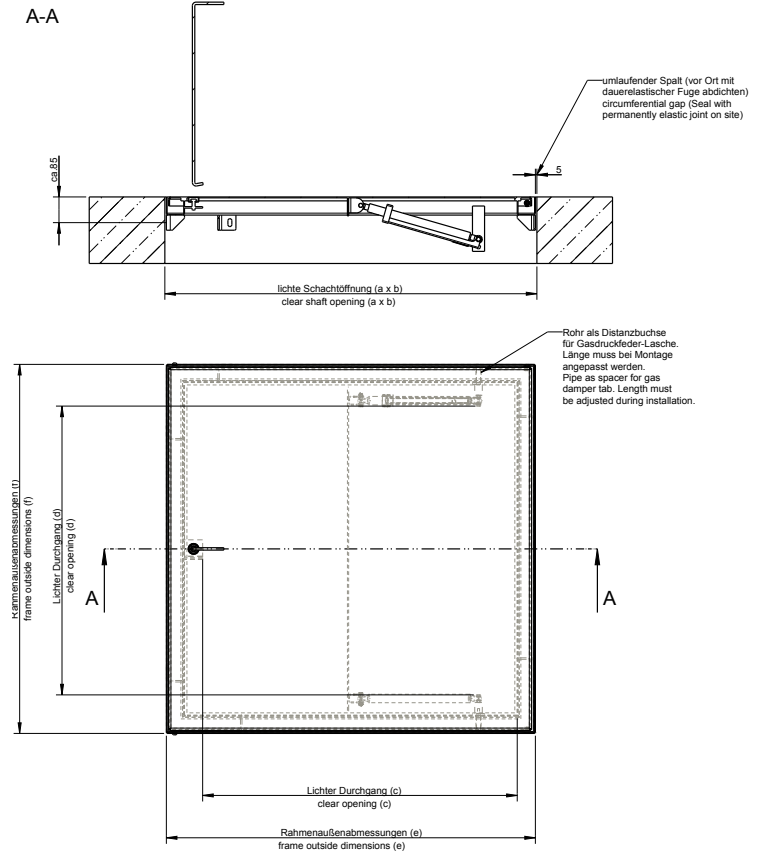
Subject to technical modification
Drawing no. 714013, 5.2022

Manhole cover SD11, for flush fitting, lightweight design

SD11, installed in on-site rabbet with gas-assisted spring dampers



SD11, installed in manhole neck with gas-assisted spring dampers



Model	Clear manhole opening a x b	Order no.	Inside pass c x d	Frame outside dimensions e x f
Standard model, with gas assisted spring dampers, installation in rabbet	800 x 800	SD11.1 800x800 GDF	800 x 685	920 x 920
Standard model, with gas assisted spring dampers, installation in rabbet	1000 x 1000	SD11.1 1000x1000 GDF	845 x 940	1120 x 1120
Standard model, with gas assisted spring dampers, installation in manhole neck	800 x 800	SD11.1 800x800 AD GDF	670 x 555	790 x 790
Standard model, with gas assisted spring dampers, installation in manhole neck	1000 x 1000	SD11.1 1000x1000 AD GDF	870 x 755	990 x 990

Ask for further dimensions. All measurements in mm.

HUBER SE

Industriepark Erasbach A1 · D-92334 Berching
 Phone: + 49 - 84 62 - 201 - 0 · Fax: + 49 - 84 62 - 201 - 810
 info@huber.de · Internet: www.huber.de

Subject to technical modification
 Drawing no. 51292113, 51293653, 5.2022

Manhole cover SD11, for flush fitting, lightweight design